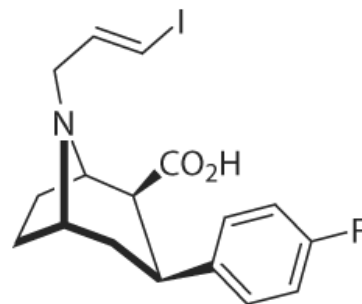


Catalogue Number	Product	Order number / Unit
<b>4200</b>	<b>Altropane acid</b> <b>Precursor for [<sup>11</sup>C]Altropane</b> <b>Molar Mass:</b> 415.24 $C_{17}H_{19}FINO_2$ [335104-67-1] Colourless solid packaged in dark glass crimp cap vials (4200.0001) or screw cap vials (4200.0025). <b>Purity:</b> > 95 % <b>Certificates:</b> CoA; <sup>1</sup> H and <sup>19</sup> F NMR spectra <b>Chemical Name:</b> CA index name: 8-Azabicyclo[3.2.1]octane-2-carboxylic acid, 3-(4-fluorophenyl)-8-[(2E)-3-iodo-2-propenyl]-, (1R,2S,3S,5S)- <b>Synonyms:</b> (E)-N-(3-Iodoprop-2-enyl)-2β-carboxy-3β-(4-fluorophenyl)-nortropane; (E)-N-(1-iodoprop-1-en-3-yl)-3-beta-(4-fluorophenyl)-nortropane-2-beta-carboxylic acid <b>Literature:</b> Fischman A.J. et al. [ <sup>11</sup> C, <sup>127</sup> I] Altropane: a highly selective ligand for PET imaging of dopamine transporter sites. <i>Synapse</i> 2001, 39, 332-342. Madras B.K. et al. Altropane, a SPECT or PET imaging probe for dopamine neurons: I. Dopamine transporter binding in primate brain. <i>Synapse</i> 1998, 29, 93-104. II. Distribution to dopamine-rich regions of primate brain. <i>Synapse</i> 1998, 29, 105-115 III. Human dopamine transporter in postmortem normal and Parkinsons brain. <i>Synapse</i> 1998, 29, 116-127.	4200.0001: 1 mg per vial 4200.0025: 25 mg per vial Please inquire for customized filling and bulk quantities.



date of product catalogue issue: 10 May 2017