

Catalogue Number	Product	Order number / Unit
------------------	---------	---------------------

9704 Y-DOTA-TOC**Reference Standard for 90Y-DOTA-TOC****Molar Mass:** 1507.52 (net peptide) $C_{65}H_{89}N_{14}O_{18}S_2Y$

[293295-66-6]

Colourless to off-white solid packaged in dark glass screw cap vials.

Purity: $\geq 95\%$ **Certificates:**

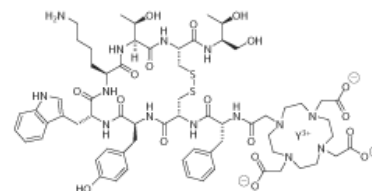
CoA; MS (identity); HPLC (purity)

Chemical Name:

Sequence: DOTA(Y)-D-Phe-Cys-Tyr-D-Trp-Lys-Thr-Cys-Thr(ol), cyclic disulfide.

Synonymes:natY-Edotreotide; natY-SMT487; natY-DOTA-[Tyr³]octreotide; Yttrium, [N-[2-[4,7,10-tris[(carboxy-κO)methyl]-1,4,7,10-tetraazacyclododec-1-yl-κN1,κN4,κN7,κN10]acetyl-κO]-D-phenylalanyl-L-cysteinyl-L-tyrosyl-D-tryptophyl-L-lysyl-L-threonyl-N-[(1R,2R)-2-hydroxy-1-(hydroxymethyl)propyl]-L-cysteinamide cyclic (2→7)-disulfidato(3-)]-**Literature:**

Villard L. et al. Cohort study of somatostatin-based radiolabeled peptide therapy with [(90)Y-DOTA]-TOC versus [(90)Y-DOTA]-TOC plus [(177)Lu-DOTA]-TOC in neuroendocrine cancers. J. Clin. Oncol. 2012, 30, 1100-1106.

Please inquire for customized filling and bulk quantities.

date of product catalogue issue: 10 May 2017