

Catalogue Number	Product	Order number / Unit
------------------	---------	---------------------

9863 DOTA-cyclo(RGDfK) acetate
Precursor for radiometal-labelled DOTA-RGD.

Molar Mass: 990.1 (net peptide)

$C_{43}H_{67}N_{13}O_{14}$

[909024-55-1] (net peptide)

Colourless to off-white freeze-dried solid packaged in screw cap vials.

Purity: > 95 %

Certificates:

CoA; MS (identity); HPLC (purity)

Chemical Name:

Sequence: cyclo[-Arg-Gly-Asp-D-Phe-Lys(DOTA)-]

Synonyms:

DOTA-RGD

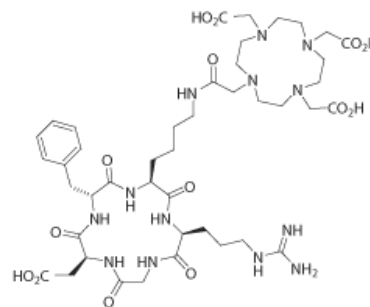
Literature:

Haukkala J. et al. ^{68}Ga -DOTA-RGD peptide: biodistribution and binding into atherosclerotic plaques in mice. *Eur. J. Nucl. Med. Mol. Imaging* 2009, 36, 2058-2067.

Decristoforo C. et al. ^{68}Ga - and ^{111}In -labelled DOTA-RGD peptides for imaging of $\alpha v\beta 3$ integrin expression. *Eur. J. Nucl. Med. Mol. Imaging* 2008, 35, 1507-1515.

Yoshimoto M. et al. In Vivo SPECT Imaging with ^{111}In -DOTA-c(RGDfK) to Detect Early Pancreatic Cancer in a Hamster Pancreatic Carcinogenesis Model. *J. Nucl. Med.* 2012, 53, 765-771.

9863.0001: 1 mg per vial
9863.0010: 10 mg per vial
Please inquire for customized filling and bulk quantities.



date of product catalogue issue: 10 May 2017