

Catalogue Number	Product	Order number / Unit
------------------	---------	---------------------

9941 deprotected DCFPyL precursor

Precursor for [¹⁸F]DCFPyL

2-(3-{1-carboxy-5-[(6-[¹⁸F]fluoro-pyridine-3-carbonyl)-amino]-pentyl}-ureido)-pentanedioic acid

Research Chemical

The tracer [¹⁸F]DCFPyL is patent-protected in some countries, please consider to inquire for PSMA-1007 compounds (ID 9943, 99433) instead, that are provided by ABX under exclusive licence.

Molar Mass: 595.52

C₂₃H₃₂F₃N₅O₁₀

CAS-RN not yet assigned

Colourless to off-white solid packaged in dark glass crimp cap vials.

Purity: > 95 %

Certificates:

CoA; ¹H NMR spectrum (identity); HPLC (purity)

Chemical Name:

5-((S)-5-carboxy-5-(3-((S)-1,3-dicarboxypropyl)ureido)pentylcarbamoyl)-N,N,N-trimethylpyridin-2-aminium 2,2,2-trifluoroacetate

Synonymes:

deprotected [¹⁸F]DCFPyL precursor; 5-((S)-5-carboxy-5-(3-((S)-1,3-dicarboxypropyl)ureido)pentylcarbamoyl)-pyridin-2-yl-trimethylammonium 2,2,2-trifluoroacetate

Literature:

Chen Y. et al. 2-(3-{1-Carboxy-5-[(6-[¹⁸F]Fluoro-Pyridine-3-Carbonyl)-Amino]-Pentyl}-Ureido)-Pentanedioic Acid, [¹⁸F]DCFPyL, a PSMA-Based PET Imaging Agent for Prostate Cancer. Clin. Cancer. Res. 2011, 17, 7645-7653.

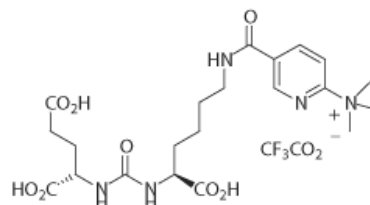
Szabo Z. et al. Initial Evaluation of [¹⁸F]DCFPyL for Prostate-Specific Membrane Antigen (PSMA)-Targeted PET Imaging of Prostate Cancer. Mol. Imaging Biol. 2015, 17, 565-574.

Rowe S.P. et al. Imaging of metastatic clear cell renal cell carcinoma with PSMA-targeted ¹⁸F-DCFPyL PET/CT. Ann. Nucl. Med. 2015, 29, 877-882.

Rowe S.P. et al. Detection of ¹⁸F-FDG PET/CT occult lesions with ¹⁸F-DCFPyL PET/CT in a patient with metastatic renal cell carcinoma. Clin. Nucl. Med. 2016, 41, 83-85.

Dietlein M. et al. Comparison of [¹⁸F]DCFPyL and [⁶⁸Ga]Ga-PSMA-HBED-CC for PSMA-PET Imaging in Patients with Relapsed Prostate Cancer. Mol. Imaging Biol. 2015, 17, 575-584.

9941.0010: 10 mg per vial
Please inquire for customized filling and bulk quantities.



date of product catalogue issue: 10 May 2017